



QUEEN ANN'S LACE

303-305 Broadway Av, Kissimmee FL 34741

Phone 407-846-7998 Fax 407-846-7773



May, June, July, 2009

www.queenannslace.com
E-mail: qal@queenannslace.com

Ponderings from Pat

A famous statesman (I can't remember who), upon reading his obituary in the morning newspaper, wrote back to the paper: "The reports of my demise have been greatly exaggerated." Well, I must add that the reports of Queen Ann's Lace demise have been greatly exaggerated. Frequently our staff hears customers say they heard we had closed. I'm here to tell you: **IT AIN'T SO!!!** We are still here three years later to serve all of your quilting and sewing needs. And we intend to stay here for quite a while longer. Just so you know how strongly I mean this, if you bring in a friend who has never been in the store before, I will give both of you a small free gift.

We have received several new shipments of fabric recently. One particularly outstanding line is from Hoffman called "Nara Gardens." Be sure to ask to see this fabric when you visit us this week. I don't expect this one to last long. And the new McKenna Ryan line "Willow" also from Hoffman should be arriving any day. We will call you when the fabric arrives if you give us your name and phone number.

In June, Bernina University will be in my own backyard here in San Francisco. This is my first year to attend and I am really excited.

The next couple of months will be busy ones for all of us. The month of May will mark the end of our third year in downtown Kissimmee and the beginning of our fourth year. Watch our regular emails for special events. We have something really special planned for Mother's Day. Look further in this newsletter and in coming weeks' emails for details. Do you want us to hold a Kid's Kamp this summer? Call or email the store to let us know if you do. Meanwhile, I must finish the income tax so I can

Go Quilting,

Pat

WHAT'S NEW

Fabrics

- ◇ Cider Mill Rd by Benartex
- ◇ Nara Gardens by Hoffman
- ◇ Hand Painted Balis by Hoffman
- ◇ Minkee Mates by Benartex
- ◇ Benartex Wide Backings
- ◇ BALI POPS by Hoffman

Books

- ◇ Strip Frenzy
- ◇ Dream Landscape
- ◇ Charmed & Dangerous
- ◇ Batik Gems
- ◇ Day & Night

Patterns

- ◇ Flamingo Frolic
- ◇ Cat in the Cabin
- ◇ Chicken for Dinner
- ◇ Grace Jelly Bargelly
- ◇ Take 5 Marks the Spot
- ◇ Be Happy Purse
- ◇ As You Like It Purse
- ◇ Cell Phone Catty's
- ◇ Cell Phone Favorites
- ◇ Drawstring Purses
- ◇ Half Moon Tote
- ◇ Kwik Scrappy Heart

FAT QUARTER FRENZY

MEMORIAL DAY

MONDAY, MAY 25

9:30 AM—2:30 PM

Nothing sews like a Bernina. Nothing.

BERNINA



Quilting—a
universal
language.

Queen Ann's Lace Shop Hours:
Mon-Wed-Thurs-Fri -Sat—10am-5pm
(Sat June-Aug 10—4)
Tuesday 10am—9pm (June-Aug 10-5)
Sunday—Closed

MONTHLY EMBROIDERY CLUB—3rd Saturday of each month—10 am—12 pm
Free to all machine embroidery enthusiasts and wannabe machine embroiderers.

May 16, June 20 & July 18

Joyce will present an interactive Embroidery Club. Bring your machine embroidered projects to share with others. Each class will be a lecture/demo and will feature specific machine embroidery techniques. Refreshments available. Bring your favorite dish to share if you desire.

Joyce will be emailing all members on a regular basis to keep in touch with what's new and upcoming club topics, etc.

NEW!

MONTHLY SOFTWARE CLUB—3rd Saturday of each month—1:30 pm—4:30 pm

May 16, June 20 & July 18 following Embroidery Club

Or Tuesdays, May 19, June 23 & July 21—1:00 pm—4:00 pm

Instructor: Linda Smith

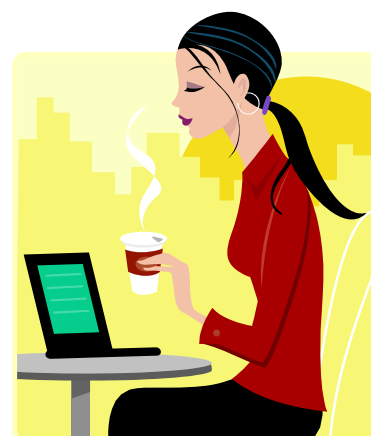
Fee: \$15.00

Bring your laptop with Bernina Designer Plus V5 Software. Linda will teach you a new software project each month to be stitched out at home.

May: Create a Sticky Note Holder & Coin Purse to embroider.

June: Create an Angel Notepad & Zippered Coin Purse

July: Create a Mini Heart piece with Decorative Stitches

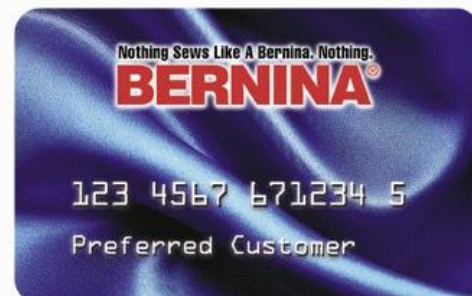


OESD DESIGN CONNECTION

Join this 12-month club membership and receive throughout the membership year: 24 Embroidery Stock Design Packs of your choice, 4 Bonus Premier Design Collections, Monthly VIP Connection emails and access to Design Connection blog. A Collectible Sewing Case starter kit includes 1000 multi-format designs, Design Sizing Program, Product Samples & Membership activation form.

Oklahoma Embroidery Designs

We are an authorized dealer of OESD embroidery designs and accessories for your Bernina. See the catalog at the store or purchase online at www.embroideryonline.com (Access code 101-98-1109)



Bernina Guide Classes

Please call ahead to register for your guide classes. Other dates available by appointment only. All software classes by appointment.

With the current financial problems we all face, and the high price of gas, we are changing our Bernina Guide Class format so you may take more than one class a day. This will save you both time and gas costs for commuting. Sign up for 1 or 2 per day. Your choice.

Mastery 2-7 may be taken in any order

**MONDAY, May 4 or
WEDNESDAY, June 17 or
MONDAY, July 20**

Mastery 1
10:00am—noon
General Information

Mastery 2
1:00-3:00pm
Practical Stitching

**SATURDAY, May 2 or
MONDAY, July 13**
Mastery Artista Embroidery 1
1:00-3:00pm

MONDAY, May 11
Mastery 3
10:00am—noon
More Practical Stitching

MONDAY, May 18
Mastery 4
1:00—3:00pm
Decorative Techniques

Mastery 5
10:00am—noon
Stitch Regulator/Decorative Details

MONDAY, June 1
Mastery 6
10:00am—noon
Memory, Stitch Manipulations, Programming & editing

Mastery 7 (200/730 only)
1:00-3:00pm
Directional Stitching

MONDAY, June 8
Mastery Artista Emb 2
10:00am—noon

Mastery Artista Emb 3
1:00-3:00pm

SATURDAY, June 13
Artista Embroidery 4
10:00am—noon

**WEDNESDAY, June 24 or
WEDNESDAY, July 29**
Mastery 3
10:00am—noon
More Practical Stitching

Mastery 4
1:00—3:00pm
Decorative Techniques

THURSDAY, July 16
Mastery 7 (200/730 only)
10:00am—noon
Directional Stitching

Mastery Artista Embroidery 4
1:00-3:00pm

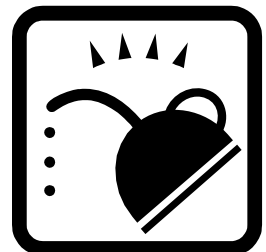
**WEDNESDAY, July 1 or
MONDAY, July 27**
Mastery 5
10:00am—noon
Stitch Regulator/Decorative details

Mastery 6
1:00-3:00pm
Memory, Stitch Manipulations, Programming & editing

TECH TALK

Welcome everyone to the New Year! How does the time go by so fast??? Speaking of time, do you know how long it has been since you have had your Bernina serviced? The years pass and we forget to have this important service done. It can result in some serious and expensive things happening to our machines! Most of us decide to do better in the next year taking care of our bodies and being better to ourselves healthwise. Think of the service as the same kind of thing for our sewing machines. The normal machine service time is one year but if you are an avid sewer then every six months is best. This tech is more than thorough with doing a COA (clean, oil, adjust). All machines benefit from this and it is worth the cost to prevent a disaster. When you bring your baby, please be sure to bring in you black buttonhole foot as well. These feet must be calibrated to go with your machine. Call ahead to check lead time for your service if desired. I look forward to seeing you all throughout the year.

Best wishes from Tech Judi!





Quilt Classes



BLOCK OF THE MONTH 2009

Instructor: Debbie LaFrance

First Thursday @ 7 pm, first Friday @ 10 am,
first Saturday @ 9:30 am beginning January, 2009
Fee to join: \$10.00 one time, bring your last
month's finished, get next months free.

Join us for our newest Block of the Month
As we will be making 12" finished blocks using
Marti Michell template sets L & A resulting in a
double/queen size quilt 94 1/2" square The Me-
dallion Center is done on your own.

SIT N' SEW

(no class June-August)

Instructor: Debbie LaFrance

Fee: \$10.00 each night

Tuesdays from 6 pm—9 pm

Bring your machine

This is your "license to sew" time with no inter-
ruptions from outside sources. Our experts will
give you as much or as little help as needed. We
will be available to guide you through the chal-
lenges and encourage everyone as their projects
near completion. You use the time as you need.

BEGINNING SEWING

Instructor: Noel Kohr

Fee: \$60.00 Includes Kit with pattern, fabric & notions.

Saturday, July 25

10 am—4 pm

Bring your machine & lunch

Beginner level

Do you long to sew a piece of clothing (or just sew anything) for your-
self or someone else? Have you tried, only to have the garment not
fit properly? If you answered "yes" to either question, you need to
spend the day with Noel to learn the basics of sewing. From fabric se-
lection and determination of amount needed, to taking the proper and
correct measurements, Noel will share her 30 years of garment sewing
experience and tips.

Bring your machine, in good working order with your manual, basic
sewing supplies, lunch and willingness to learn! By the end of class,
you will have your first finished garment (pajama pants) and take away
the confidence and courage to start your next sewing project! Fabric
types, sizes, grain line, proper cutting techniques, sewing a straight
seam, making a casing and pockets, inserting elastic and finishing a
hem will all be accomplished in this day long class.

ABOUT CLASSES

Classes are not generally intended to com-
plete the project IN CLASS. Time & cost
would be prohibitive. Classes are intended to
teach a technique/pattern that you complete
on your own.

Great Teachers—Great Classes

Join Judi, Carol, Linda, Leslie, Noel, Joyce, Pat and Debbie for
a season of great quilting and fun projects.

Class Policies

Full class fee is required to hold your space in
class. Please pay in advance of the class day.
Class registration can be done over the phone
with a credit card. Fees are non-refundable
unless it is cancelled by you or the store one
week prior to class.

Classroom Machines Available

When taking classes at Queen Ann's Lace, with prior reservation, a
Bernina Aurora machine will be set up for the class that you are taking.
Someone will show you how to thread it and to fill a bobbin. It is prefer-
able for you to bring your own machine that you are familiar with, but
sometimes, for various reasons, this is not feasible, so we provide one for
the entire class - not per session. Reservation required. You must supply
your own thread, scissors, etc.



**THE TWO-HOUR
TULIP PURSE**

Instructor: Pat Zimmerman

Friday, Monday, May 11 or

Friday, June 5

1 pm—4 pm

Fee: \$15.00 Pat

Choose from multiple sizes—Petite to Jumbo. Larger bags take more time. Make up in batiks or your favorite theme Fabrics. Plan ahead for your gift list.

REVERSIBLE GROCERY TOT

Instructor: Pat Zimmerman

Friday, May 8

10 am—1 pm Or

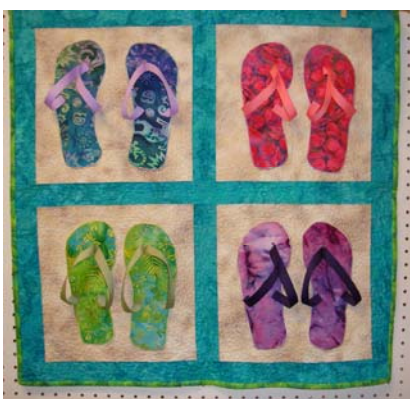
Monday, June 15 10 am—1 pm Or

Wednesday, July 15

1 pm—4 pm

Fee: \$15.00

Make your own shopping bag to bring to Queen Ann's Lace. Embroider our store name and designs as desired. If you don't have an embroidery machine, make an appointment to come in and we will help you with your embroidery. Receive 20% discount off regular price merchandise (excludes machines & software) when you bring you bag in on WEDNESDAYS!



FLIP N' FLOP SUMMER

Instructor: Judi Korona

Saturday, June 6

10 am—4 pm

Fee: \$30.00

Have a teen in the family or an avid beachette? This little gem is perfect. Learn basic machine appliqué as well.

BEACH COTTAGES

Instructor: Judi Korona

Thursday, July 9 & 23

10 am—4 pm

Fee: \$50.00

Create your own paradise with paper piecing & strip piecing. Super easy & fun to embellish your own private beach cottages retreat.

FRIENDSHIP STAR

Instructor: Carol Darrow

Saturday, May 30, June 13, June 27, and July 11

1 pm—4 pm

Fee: \$60.00

Pre-requisite: Start Quilting or Quilt from Scratch Rail Fence Class

For all my beginning quilters—this is the next step. Learn to make triangles and not lose your points in this small wallhanging. Includes rotary cutting, piecing, borders, quilting, binding.

PAPER PIECING 101

Instructor: Judi Korona

Tuesday, June 9

10 am—3pm

Or Friday, July 10

10 am—3 pm

Fee: \$25.00

Bring your machine and lunch

This is the "other" way to quilt. Fast, easy and lots of fun. Once you've paper pieced you may never want to go back to traditional quilting. Perfect points every time. Bring small and large scraps. Patterns will be supplied.

SPECIAL GROUP EVENT

Project Linus

Director: Susan Murphy, Chapter Coordinator

3rd Friday; 10:00am – 1:00pm

Join in anytime you can and help make blankets/quilts to give to children in need. Come with or without your machine and be prepared to work on getting these comfort blankets completed for distribution. The more given, the more are needed to give out. Your help will not be turned away.

Class Parking

3 hour limit on street

Large new public parking lot on E. Dakin just behind the new City Center building.

Parking lot on corner of Dakin and Church behind store.

Unloading available at our back door.

SCRAP THERAPY: Triple Dip

Instructor: Staff

Friday, May 29 (cutting workshop)

10 am—12 pm &

Friday, June 12

10 am—4 pm (includes lunch)

Fee: \$35.00

Bring your machine *Beginners to Advanced*

Are you overwhelmed by your fabric stash tumbling out of every nook & cranny of your living space? This class will tame your out-of-control stash and bring you some peace of mind by actually putting it to good use in this class. Make a quilt or a delightful table topper.



SCRAP THERAPY:

Runaway Thread

Instructor: Staff

Thursday, June 18 (cutting workshop)

10 am—noon &

Thursday, June 25

10 am—4 pm (includes lunch)

Fee: \$35.00

Bring your machine *Beginners to Advanced*

Are you overwhelmed by your fabric stash tumbling out of every nook & cranny of your living space? This class will tame your out-of-control stash and bring you some peace of mind by actually putting it to good use in this class. Make a quilt or a delightful table topper.

40% Off—Last Saturday of Month
 During the months of May, June & July, visit our shop on the last Saturday of the month and receive 40% off on any one regular priced item not over \$50.00 (excluding machines and software) In stock only.

SCRAP THERAPY:

Scrappy Trails

Instructor: Staff

Friday, July 24 (cutting workshop)

10 am—12 pm & Friday, July 31

10 am—4 pm (includes lunch)

Fee: \$35.00

Bring your machine

Beginners to Advanced

Are you overwhelmed by your fabric stash tumbling out of every nook & cranny of your living space? This class will tame your out-of-control stash and bring you some peace of mind by actually putting it to good use in this class.



QUILT EMBELLISHMENT

Instructor: Judi Korona

Wednesday, May 20

10 am—4 pm

Fee: \$30.00

Bring your machine & lunch.

Learn to bring your quilts to life with beading & glitz. Add some bling!

Local Quilt Guild:
 Patchers of Time Quilt Guild
 Meets 2nd Monday of every month
 Osceola Center for the Arts—6:30 pm
 2411 E. Irlo Bronson Hwy.
 Workshops 3rd Sat of each month
 St. Cloud Senior Center Annex
 For info call Debbie @ 407-346-6086

To have your guild information listed, contact us at 407-846-7998.
 Quilt Guild members receive a 10% discount on purchases excluding software and machines.



LATTE QUILT

Instructor: Linda Smith

Fee: \$175.00 payable in 2 installments: \$87.50 on registration and \$87.50 on or before July 1st.

11 am—4 pm

Tuesday, June 2, 16, 30, July 14, 28, August 11 & 25

Bring your embroidery machine. Class compatible with Bernina Aurora 430, 440, Artista 630, 640, 730 or 830, Janome 11000 or Brother with Large Hoop.

This gorgeous machine embroidered quilt by Kerrie Hay has been a favorite for some time now but maybe you've missed your opportunity to make the Latte Quilt with expert instruction. Modern technology with old traditions will inspire you to create this masterpiece. The CD included in the book contains the Latte Quilt embroidered block patterns in multiple formats. Linda will present the lessons as derived with Faith Reynolds on the www.berninausa.com website incorporating decorative stitches to be included all in a mega hoop.

Carolina Lilly

Instructor: Leslie Hickland

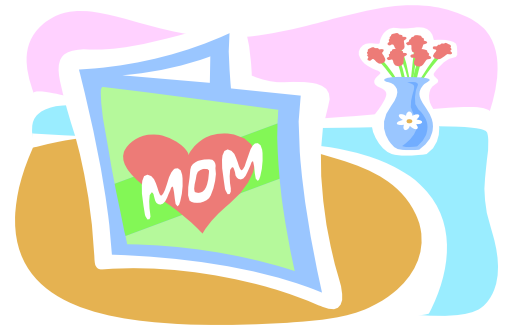
Saturday, June 27

10 am—4:00 pm

Fee: \$35.00

Bring your machine and lunch

This is a unique wall-hanging using “straight seam piecing with curved results”. Translation: You get the look of curves but don’t actually have to piece any! Leslie chose to make her sample in her favorite batiks but commercial prints would work just as well. While this project is not difficult, it is not designed for a beginner. Some quilting experience is suggested.



MOTHER'S DAY SEWING GIFTS

Sunshine Makes Me Happy (a jelly roll quilt)



Instructor: Carol Darrow

Wednesday, July 8 & 22

10 am—1 pm

Fee: \$30.00

Bring your machine. Great Beginner Class.

Start with one Jelly Roll, mix in a border & binding fabric, and complete this 52” x 65” happy quilt that will leave you smiling in no time.

One of our gracious customers, Theresa Willie, of Cutler Bay, FL and Queen Ann’s Lace are giving away REALLY BIG SEWING SURPRISE GIFTS to deserving sewing mothers in honor of Mother’s Day. There will be a total of three prizes presented. You do not want to miss this opportunity to display your appreciation & affection for a very special sewing mother of your choice. In order to nominate a mother, please stop in the store to fill out your nomination form no later than May 4th. Winners will be determined by Queen Ann’s Lace. Announcement of the winners and presentation of the Mother’s Day Sewing Gifts will be presented on Saturday, May 9th.



May 2009

SUN	MON	TUE	WED	THU	FRI	SAT
Mastery Classes Call for Appt.					1 Sampler BOM, 10 am	2 Sampler BOM 9:30 am Mastery Artista Emb1 1—3pm
3	4 Mastery 1 10AM—12PM	5	6	7 Sampler BOM 7 pm	8 Reversible Gro- cery Tote 10am-1pm	9 Friendship Star I 1pm-4pm
10	11 Two-Hour Tulip Purse 1pm-4-m	12	13	14	15 Linus Group 10 am	16 Embroidery Club, 10am- noon Software Club 1:30pm-
17	18 Mastery 4 1pm—3pm Mastery 5 10am-12pm	19 Software Club 1:00-4:00pm	20 Quilt Embel- ishment, 10am	21	22	23 Friendship Star II, 1pm-4pm
24	25 Memorial Day Fat Quarter Frenzy 9:30am-2:30 pm	26	27	28	29 Scrap Therapy 1 Triple Dip 10-12	30 40% OFF ONE ITEM DAY Friendship Star III, 1-4pm
31						

June 2009

SUN	MON	TUE	WED	THU	FRI	SAT
Mastery Classes Call for Appt.	1 Mastery 6 10am—12pm Mastery 7 1pm—3pm	2 Latte Quilt I 11 am-4pm	3	4 Sampler BOM 7 PM	5 Sampler BOM 10 AM Two-Hour Tulip Purse 1pm-4-m	6 Sampler BOM 9:30 am Flip n' Flop Summer 10 am-4pm
7	8 Mastery Artista Emb 2 10am— noon Mastery Artista Emb 3 1pm— 3pm	9 Paper Piecing 10am-3pm	10	11	12 Scrap Therapy 2 Triple Dip 10-4	13 Mastery Artista Emb 4 10am— noon Friendship Star IV, 1pm-4pm
14	15 Reversible Grocery Tote 10am-1pm	16 Latte Quilt II 11 am-4pm	17 Mastery 1 10AM—12PM	18 Scrap Therapy 1 Runaway Thread 10-12	19 Linus Group 10 am	20 Embroidery Club, 10a-noon Software Club 1:30-4:30pm
21	22	23 Software Club 1:00pm-4:00pm	24 Mastery 3 10am—12pm Mastery 4 1pm—3pm	25 Scrap Therapy 2 Runaway Thread 10-4	26	27 40% OFF ONE ITEM DAY Carolina Lily
28	29	30 Latte Quilt III 11 am-4pm				

July 2009

SUN	MON	TUE	WED	THU	FRI	SAT
Mastery Classes Call for Appt.			1 Mastery 5 10am—12pm Mastery 6 1pm—3pm	2 Sampler BOM 7 PM	3 Sampler BOM 10 AM	4 CLOSED HAPPY 4TH
5	6	7	8	9 Beach Cottages I, 10am-4pm	10 Paper Piecing 10am-3pm	11 Sampler BOM 9:30 am
12	13 Mastery Artista Emb1 1—3pm	14 Latte Quilt IV 11 am-4pm	15 Reversible Grocery Tote 1pm-4pm	16 Mastery 7 10am—12pm Mastery Artista Emb 1pm—3pm	17 Linus Group 10 am	18 Embroidery Club 10-12 Software Club 1:30pm- 4:30pm
19	20 Mastery 1 10AM—12PM	21 Software Club 1pm-4:pm	22 Sunshine Makes Me Happy, 10am-1pm	23 Beach Cottages II, 10am-4pm	24 Scrap Therapy 1 Scrappy Trails 10am-12pm	25 40% OF ONE ITEM DAY Beginning Sewing 10am-4pm
26	27	28 Latte Quilt V 11 am-4pm	29 Sunshine Makes Me Happy II 10am-1pm	30	31 Scrap Therapy 2 Scrappy Trails 10am-12pm	